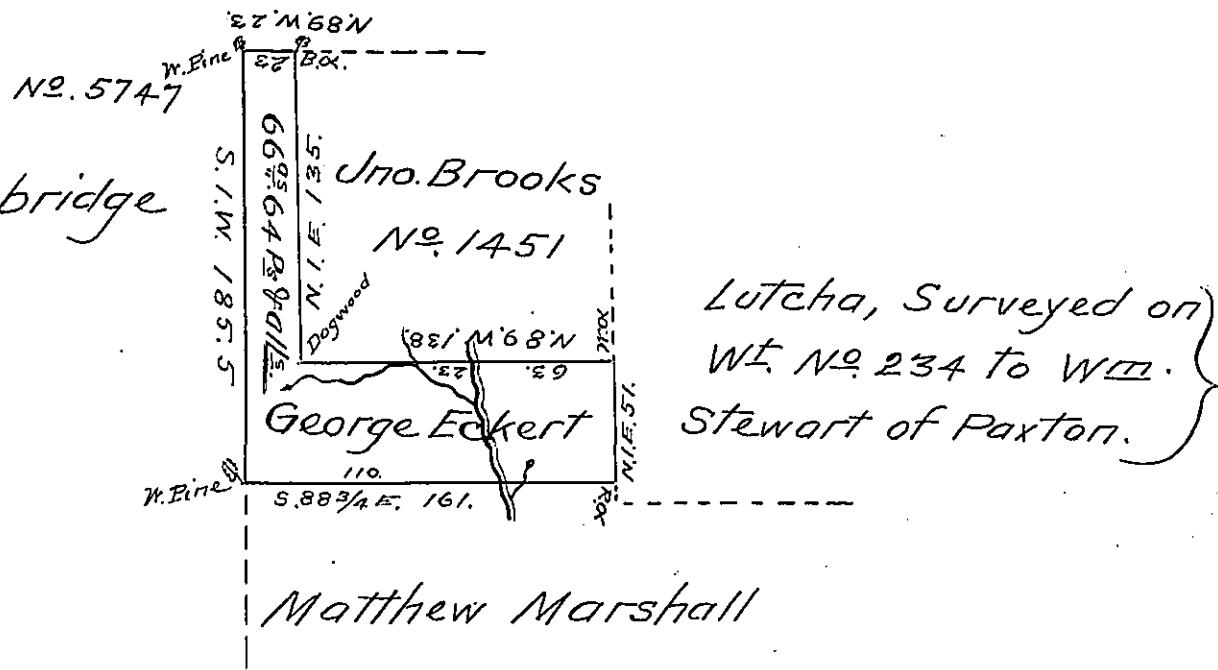


Jas Strawbridge

Jas Strawbridge



Situate in Mifflin Township County of Lycoming on the head Springs of Pine Run and bounded as above described, Surveyed to George Eckert on the 19th day of November 1839 by virtue of his Warrant for 65^{as} dated July the 18th 1839 containing Sixty Six acres & Sixty four perches with the allowance of six per Cent for Roads &c

Alex^r H. McHenry D.S.

To Jacob Sallade Esquire }
 Surveyor General }

IN TESTIMONY that the above is a copy of the original remaining on file in the Department of Internal Affairs of Pennsylvania, made conformably to an Act of Assembly approved the 16th day of February, 1833, I have hereunto set my Hand and caused the Seal of said Department to be affixed at Harrisburg, this first day of October 1904.

Joseph P. Brown
 Secretary of Internal Affairs.